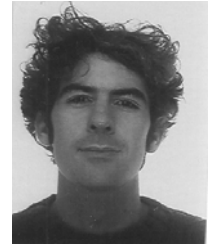


Dr. Sylvain Sebert, PhD
School of Clinical Sciences
Early Life Nutrition Research Unit
University Hospital – Queen’s Medical Campus
University of Nottingham
Nottingham
NG7 2UH
United Kingdom
sylvain.sebert@nottingham.ac.uk



ACADEMIC RESEARCH CAREER AND QUALIFICATIONS

Nov 2005 - Today: Academic Research Fellow - University of Nottingham, United Kingdom

Research project: Early origins of energy homeostasis – Influence of perinatal growth on appetite control and the later risk for obesity

Research Unit: Early Life Nutrition Research Unit, Academic Child Health, Division of Human Development and Nottingham Respiratory Medicine Biomedical Research Unit, School of Clinical Sciences

Grant: EARNEST – Early nutrition programming Project (FP6 - FOOD-CT-2005-007036) – Nutricia Research Foundation – Biomedical Research Unit – University of Nottingham

Oct 2000 – Dec 2004: PhD in Nutrition Physiology – University of Nantes, France

Thesis: Metabolic and physiological repercussion of childhood obesity; study on Yucatan miniature swine
PhD supervisor: Dr. M Champ

Research Unit: Digestive Functions and Human Nutrition Unit (UFDNH) National Institute of Agronomic Research (INRA) and centre for human nutrition research (CRNH), Nantes, France

Grant: Region Pays-de-la-Loire (France) – National Institute of Agronomic research (INRA) - Merck-Lipha

SKILLS AND RESEARCH INTEREST (KEY WORDS)

Skills: *in vivo* physiology, large animal model, cellular and molecular biology

Research interest: Perinatal nutrition, energy sensing, appetite, obesity, epigenetic programming

REFERENCES

Symonds M, Sebert S, Budge H (In press) Nutritional regulation of fetal growth and implications for productive life in ruminants. *Animal*

Symonds M, Sebert S, Budge H (2010) Dangers of dieting: what advice should be given to obese expectant mothers? *Expert Rev Obstet Gynecol* 5:39-47

Sebert S, Hyatt M, Chan L, Yiallourides M, Fainberg P, Patel N, Sharkey D, Stephenson T, Rhind S, Bell R, Budge H, Gardner D, Symonds M (2010) Influence of prenatal nutrition and obesity on tissue specific fat mass and obesity-associated (FTO) gene expression. *Reproduction (Cambridge, England)* 139:2583-2587

Yiallourides M, Sebert SP, Wilson V, Sharkey D, Rhind SM, Symonds ME, Budge H (2009) The differential effects of the timing of maternal nutrient restriction in the ovine placenta on glucocorticoid sensitivity, uncoupling protein 2, peroxisome proliferator-activated receptor-gamma and cell proliferation. *Reproduction (Cambridge, England)* 138:601-608

Symonds ME, Sebert SP, Hyatt MA, Budge H (2009) Nutritional programming of the metabolic syndrome. *Nature reviews* 5:604-610

Sebert SP, Hyatt MA, Chan LL, Patel N, Bell RC, Keisler D, Stephenson T, Budge H, Symonds ME, Gardner DS (2009) Maternal nutrient restriction between early and midgestation and its impact upon appetite regulation after juvenile obesity. *Endocrinology* 150:634-641